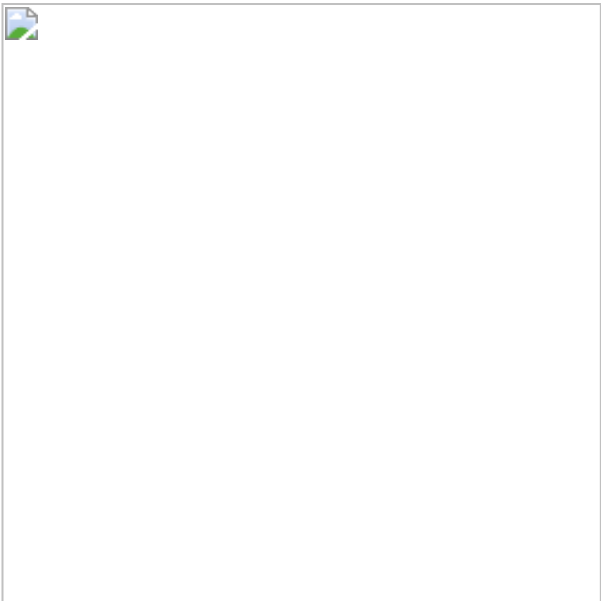
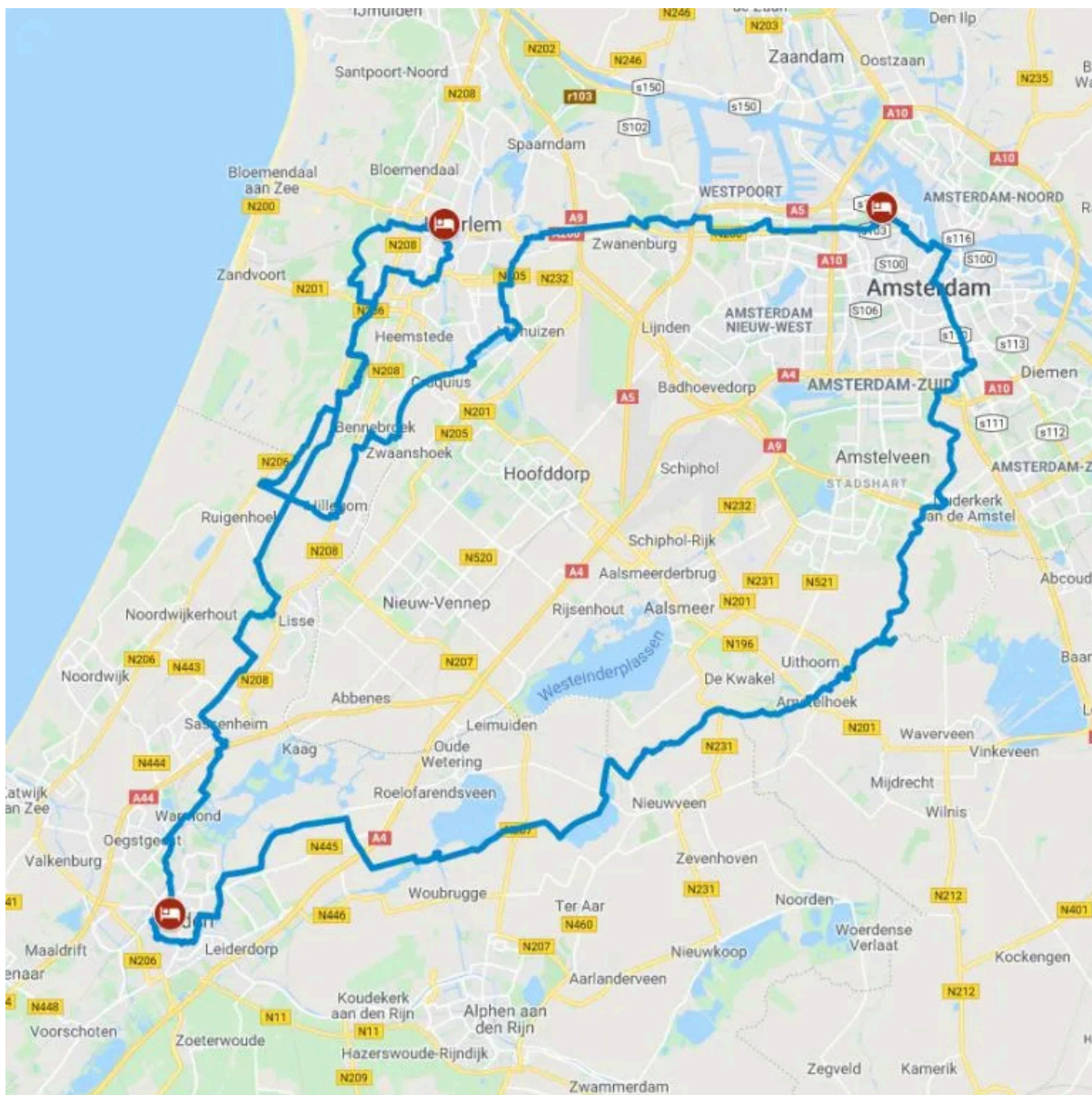




Tulip Tour
5 days,
€ 604

Introduction





This wonderful trip to the Bulb Flower district is recommended from April to mid-May; the period you're most likely to strike lucky and see the tulip fields in full bloom (although nobody can predict exactly when spring will set in). Opening times for world-famous Keukenhof park vary each year but fall roughly within this timespan.

Also take a look at our [Tulip tour in North Holland](#).

Day to Day



Day 1 **Arrival Amsterdam**

Get here early and opt to wander around the gorgeous and surprisingly peaceful seventeenth century canal ring area (World Heritage Site). If you like bustle, make your way to the city's famous squares: Dam, Rembrandtplein and Leidseplein. Should you prefer to roam off the beaten track, saunter up Brouwersgracht or hire a canal bike and find out what the city looks like from the water. Parking in Amsterdam is difficult.

Day 2 **Amsterdam - Haarlem/Santpoort**

53 km

It may be tempting to linger in Amsterdam, but today is the day you get to see your first tulip fields! Set off early to leave behind the hustle and bustle of the lively capital and enter a region called South Kennemerland.

Firstly, head for Cruquius, a steam-driven pumping station for a lesson in Dutch water management. The steam mill Cruquius, Haarlem, is itself a Netherlands 'Rijksmonument' for the steam history of the engine within, and it has also been declared an Anchor Point of ERIH, The European Route of Industrial Heritage. It is thought to be the largest steam engine – and certainly the largest beam engine – ever built. The reclamation of Haarlemmermeer by means of steam power marked the breakthrough of the Industrial Revolution in the Netherlands. You cycle from Cruquius in a loop around Haarlem and just after the village of Bennebroek you can catch your first short glimpse of the tulip fields.

Top off your day roaming lovely downtown Haarlem, from impressive Grote Markt square, to the white drawbridge on the River Spaarne. Idyllic courtyards, known as 'hofjes', will set your heart a-flutter. Haarlem is home to the oldest hofje dating from 1395.

It can happen that we will book a hotel in Santpoort instead of Haarlem, due to availability. The hotel is located in a manor house with a beautiful park, surrounded by nature, about 7 km outside Haarlem. Please check the extra price of Landgoed Duin & Kruidberg Hotel in Santpoort in the price overview below. The price includes dinner for this night.



Day 3 **Haarlem/Santpoort - Leiden**

38 km

Downtown Haarlem deserves to be explored thoroughly. We recommend a city walk to discover the city's hidden "hofjes". A hofje is a square of tiny almshouses set around an idyllic courtyard, often built by the church or by private charity to house single older women. Also dating back to the Dutch Golden Age, the works of Haarlem painter Frans Hals (group portraiture) and his townsmen including Jacob Ruysdael (land- and seascapes) and Pieter Saenredam (church interiors) are on display at the Frans Hals museum.

In the afternoon get set for a colourful bike trip through the Dune and Bulb Region. Try to time this holiday before mid-May to capture the bulb flower fields in their full splendour! Tulips, crocuses, daffodils and hyacinths are grown here commercially (for bulb export) and temporarily transform the landscape into one of the country's best-loved tourist attractions.

Should you want to spend a day at world famous Keukenhof flower exhibition (www.keukenhof.nl), we recommend you book an extra night in Leiden. Our advice: book your Keukenhof tickets online in advance.

Leiden is our oldest university town. It has a very busy cultural events calendar and a friendly city centre with canals, monuments, windmills and museums. The historical botanical gardens get special mention. The route back to Amsterdam takes you past several lakes, across rural 'Green Heart', to the River Amstel.

On the banks of this lovely river, you will encounter pretty villages and grand country houses. This is one of the greenest routes there is to get you right into Amsterdam back to your hotel. As you may have guessed, the city is named after the river. In the 13th century, Amsterdam started out as a fishing village by a dam at the mouth of the river. The oldest part of Amsterdam is around the Oude Kerk (Old Church). Known as Amsterdam's living room, it's the oldest building in the city.

Day 4 **Leiden - Amsterdam**

63 km

The route back to Amsterdam takes you past several lakes, across rural 'Green Heart', to the River Amstel. On the banks of this lovely river, you will encounter pretty villages and grand country houses. This is one of the greenest routes there is to get you right into Amsterdam back to your hotel.

As you may have guessed, the city is named after the river. In the 13th century, Amsterdam started out as a fishing village by a dam at the mouth of the river. The oldest part of Amsterdam is around the Oude Kerk (Old Church). Known as Amsterdam's living room, it's the oldest building in the city.

Day 5 **Return home**

After breakfast your cycling holiday has come to an end.



Starting dates:

Daily from April 1st till May 3rd 2025

Please note: a minimum stay of 2 nights in a row is required in the hotel in Amsterdam on the following dates (and a higher price will be charged):

April 18-20 2025

April 25-27 2025

Price pp		€
Double room, breakfast		599.00
Single room, breakfast		899.00
Extra night double room, breakfast only		80.00
Upgrades pp/night		€
Landgoed Duin & Kruidberg, Santpoort		70.00
Westcord Art Hotel, Amsterdam		10.00
Surcharge per person		€
Stay in Amsterdam on Saturday		25.00
Stay in Amsterdam from: 25/04/2025 - 26/04/2025 29/05/2025 - 31/05/2025 06/06/2025 - 08/06/2025 21/06/2025 - 22/06/2025 24/06/2025 - 25/06/2025 29/08/2025 - 31/08/2025		40.00
Rental bike		€
Child bike		44.00
Hybrid		52.00
E-bike		112.00
Extra services		€
Bike Breakdown pass	€ 4.00 x 4	16.00
Child seat	€ 5.00 x 4	20.00
Bike theft insurance	€ 3.00 x 4	12.00
E-bike theft insurance	€ 6.00 x 4	24.00
Extra luggage	€ 5.00 x 4	20.00
Tag-along bike	€ 10.00 x 4	40.00
Child trailer	€ 18.00 x 4	72.00
Bike helmet	per piece	10.00



SGR	per piece	5.00
discount	per piece	-20.00

Starting Point:
Amsterdam



Accommodation

The hotels or B&Bs on this trip have been carefully selected for their location, atmosphere and/or unique services. All rooms are en-suite. A list of the hotels we work with appears below. If a certain accommodation is unable to confirm due to lack of availability, we will request a comparable alternative.

When selecting the accommodation, we try to take into account as much as possible a safe and closed bicycle shed. However, we cannot do this with all of them guarantee and this partly depends on the number of bicycles of other guests.



Westcord Art Hotel ***/**** (Amsterdam)

www.westcordhotels.nl/art-hotel-amsterdam

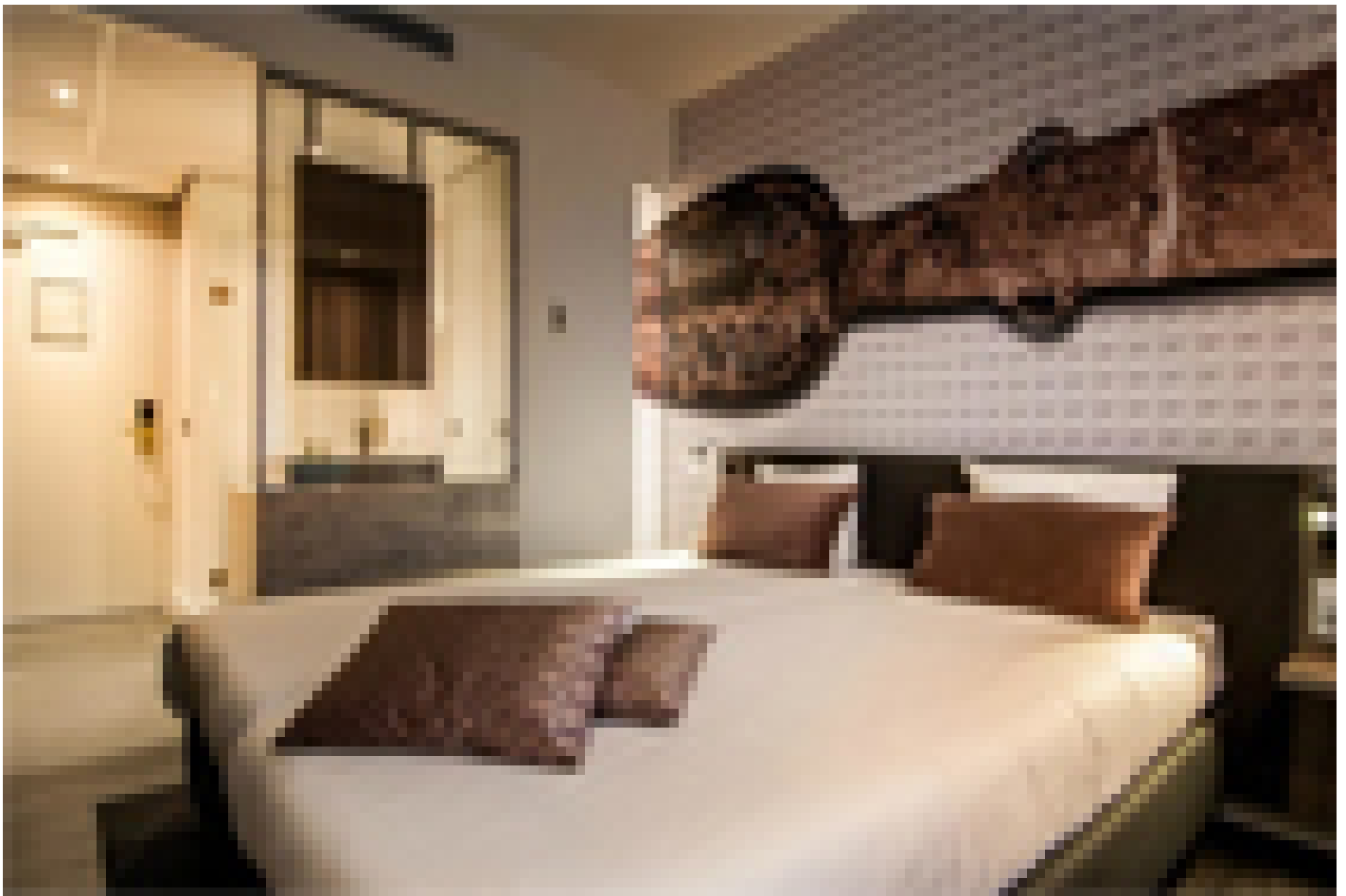




Hotel Lion d'Or ***** (Haarlem)

www.hotelliondor.nl





Tulip Inn Leiden Centre *** (Leiden)

www.goldengreenhotels.nl/golden-tulip-en-tulip-inn-leiden/



Practical Info

4 Nights included

3/4 Star Hotels

Breakfast included



Detailed roadbooks with maps and tourist information



The possibility of renting our bikes



7-days a week service-hotline



Luggage transport to your next hotel



Amsterdam Sloterdijk / Amsterdam CS. For more information:

[ns.nl/reisplannen](https://www.ns.nl/reisplannen)





Parking possibilities at the hotel



Any ferry crossings are not included
Arrival info



Nearest Airport is Amsterdam Airport Schiphol (AMS)



The train from Schiphol to Amsterdam Sloterdijk departs 6 times per hour. Travel time is about 10 minutes. A single ticket costs approx €4,- per person excl. bicycle.

For timetables and tickets, go to www.ns.nl/en. For bus details, how to reach the hotel, check : www.9292.nl/en.

